



University of
South Australia

A participatory Web Map App for the Walk the Yorke trail

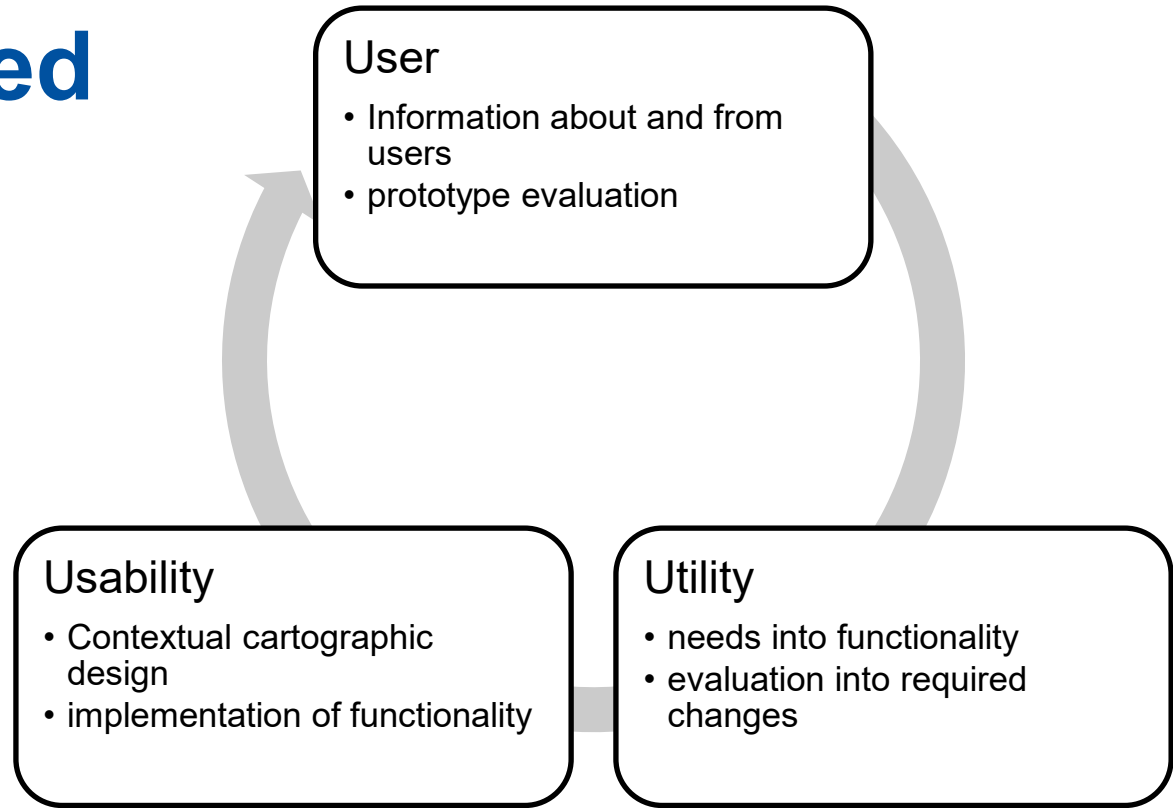
Joshua Gore

The Trail



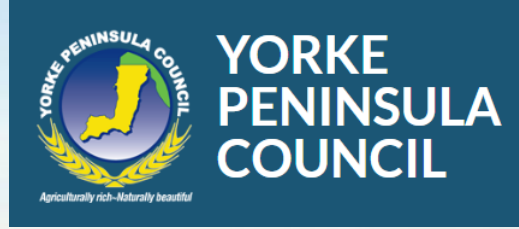
University of
South Australia

User Centred Design



The Project

- Users Needs
- Solutions made possible by recent developments
- The applicability and success of these solutions




Solution Demo

wty.joshgore.com.au



Home >

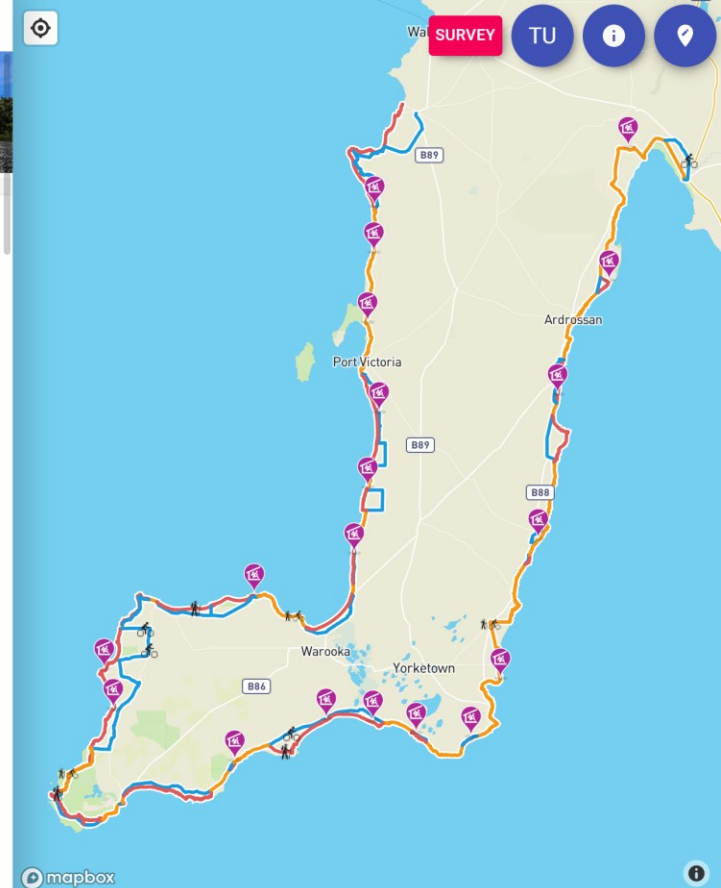


Walk the Yorke Trail

DOWNLOADS

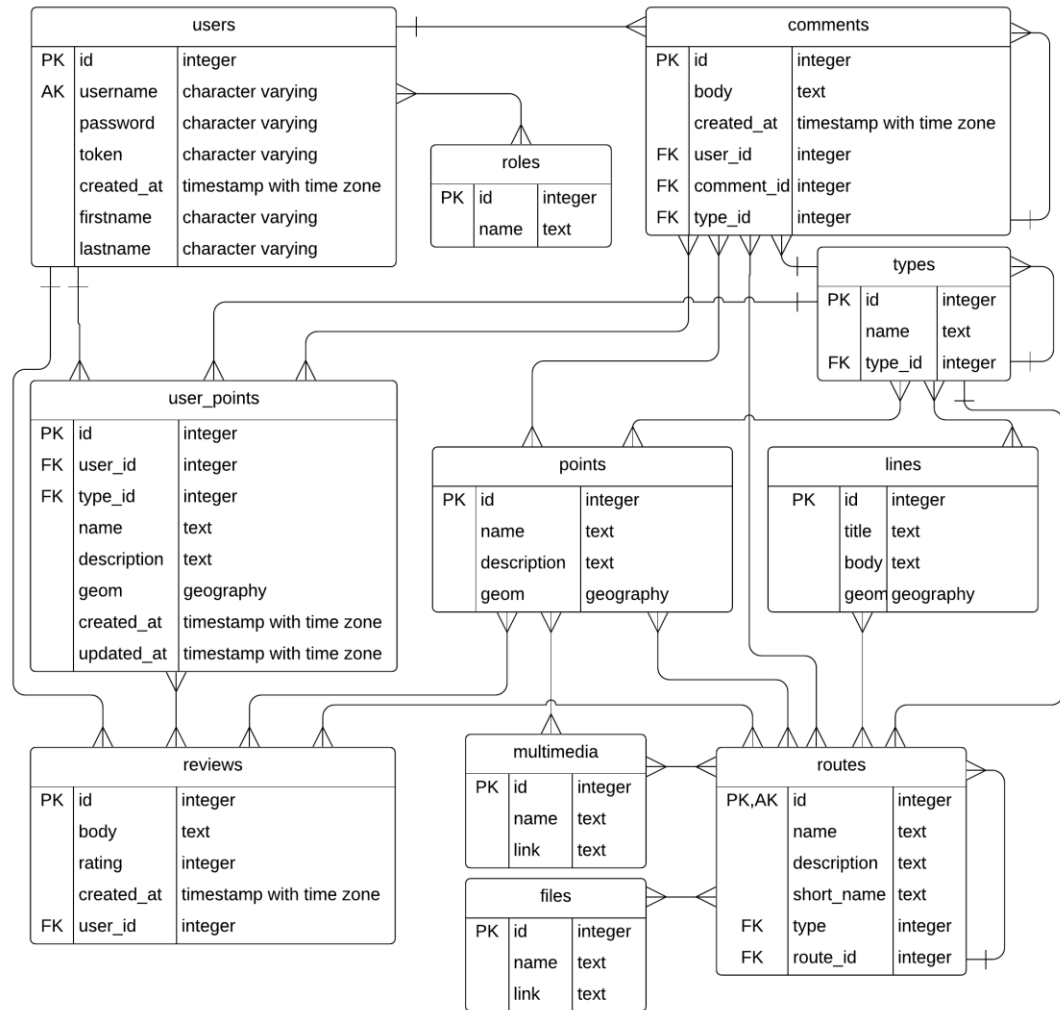
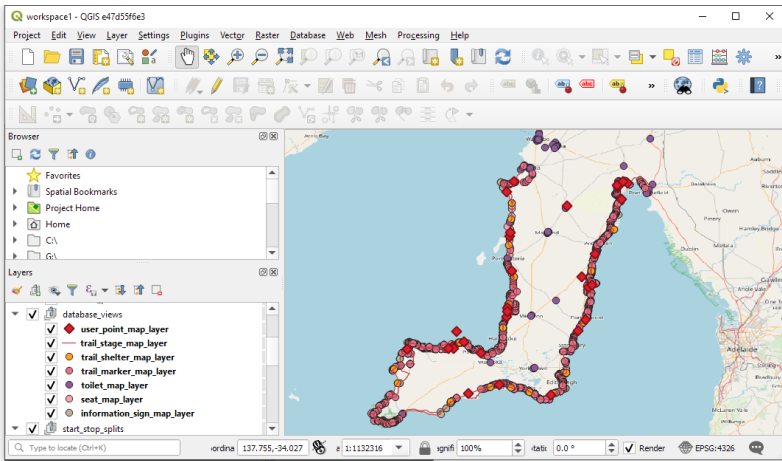
6 reviews
★★★★★

With more than 500 kilometres of continuous shared walking & cycling leisure trail, you can explore Yorke Peninsula's coastline from Port Wakefield to Moonta Bay. With coastal trails & town walks, Walk the Yorke showcases Yorke Peninsula's spectacular coastline, diverse coastal communities and environments unique to 'Yorkes'. Choose from short walks or a day walk, or why not try a multi-day walk? The hero walks of Walk The Yorke are those recommended by the designers and developers of this 500km trail, and have some of the best scenery & walking experiences. Walkers can purchase detailed topographical maps of Walk The Yorke to help with planning their journey. The maps can be purchased as sectional maps or as a complete set of 10 from the Yorke Peninsula Visitor Centre



University of
South Australia

PostGIS Database





Schema: public

search table/view/function

Tables (32)

Add Table

comments

files

line_route

line_type

lines

multimedia

point_comment

point_multimedia

point_review

point_route

point_type

points

reviews

roles

route_comment

route_file

route_multimedia

SQL

Migrations

You are here: Data > Schema > public > comments > Modify

comments

Browse Rows

Insert Row

Modify

Relationships

Permissions

Add a comment

Columns

Edit id - integer, primary key, unique, default: nextval('comments_id_seq'::regclass)

Edit body - text

Edit created_at - timestamp with time zone, nullable, default: now()

Edit user_id - integer

Edit comment_id - integer, nullable

Edit type_id - integer, nullable

Add a new column

column name

column_type



Nullable



Unique

default value

+ Add column

+ Frequently used columns

Primary Key

Edit id - comments_pkey



GraphQL Endpoint

Request Headers

Explorer



GraphiQL



Prettify

History

Analyze

Explorer

Voyager

< Docs

▶ order_by:
▶ where:
☐ multimedia_id
▼ multimediu
☐ id
☒ link
☒ name
▶ point_multimedia
▶ point_multimedia_aggregate
▶ route_multimedia
▶ route_multimedia_aggregate
▶ route
☐ route_id
▶ route_multimedia_aggregate
▶ route_reviews
▶ route_reviews_aggregate
▶ routes
▶ routes_aggregate
☒ short_name
☐ type
▼ typeByType

```
1 query MyQuery($id: Int!) {  
2   routes_by_pk(id: $id) {  
3     typeByType {  
4       name  
5     }  
6     short_name  
7     name  
8     route_multimedia {  
9       multimediu {  
10        name  
11        link  
12      }  
13    }  
14    description  
15  }  
16 }  
17
```

QUERY VARIABLES

```
1 {  
2   "id": 10  
3 }
```

```
{  
  "data": {  
    "routes_by_pk": {  
      "typeByType": {  
        "name": "stage"  
      },  
      "short_name": "Stage 9",  
      "name": "Stage 9: Foul Bay to Marion  
Bay",  
      "route_multimedia": [  
        {  
          "multimediu": {  
            "name": "demo image",  
            "link": "/images/stage1.1.jpg"  
          }  
        }  
      ],  
      "description": "One of the most  
rewarding but challenging sections of the  
Walk The Yorke trail, from Foul Bay to  
Marion Bay it is a total of 25.3km in  
length, expected to take approximately 6  
hours 20 minutes.\n\nExperienced walkers  
recommend allowing up to 10 hours to
```


Tegola

An open source vector tile server written in Go, Tegola takes geospatial data and slices it into vector tiles that can be efficiently delivered to any client.

Get Started

Try it

```
[[providers.layers]]
  name = "trail_stages"
  geometry_fieldname = "geom"
  id_fieldname = "id"
  sql = """
    SELECT lines.id, ST_AsBinary(geom::geometry) AS
    geom, types.name AS use, routes.id AS route_id,
    routes.route_id as trail_id FROM lines
    JOIN line_type ON line_type.line_id = lines.id
    JOIN types ON types.id = line_type.type_id
    JOIN line_route ON line_route.line_id = lines.id
    JOIN routes ON line_route.route_id = routes.id
    WHERE routes.type = 1 AND geom::geometry &&
    !BBOX!
  """
```

<http://tiles.wty.joshgore.com.au>

[+](#)
[📁](#)
[📁](#)
[🔗](#)
[🗑️](#)
136/136 ▼

- user-point-selection
- shelter-selection
- user-point
- shelter
- toilet
- information-sign
- seat
- trail-marker
- country-label
- state-label
- settlement-label
- settlement-subdivision-label
- airport-label
- transit-label
- poi-label
- water-point-label
- water-line-label
- natural-point-label
- natural-line-label
- waterway-label

T user-point-selection

Style Select data ✕

Text Icon Position Placement

Text field
["format", ["g...

Color

Opacity
1

Font
Open Sans Regu...

Size
10.33 px

Letter spacing
0 em

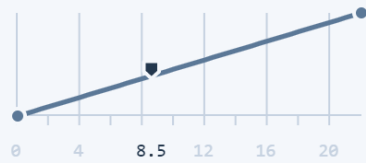
Line height
1.2 em

Max width
10 em

Transform
Tt

Halo color

Text size Zoom range



Rate of change linear Edit

Zoom 0 Edit
8 px

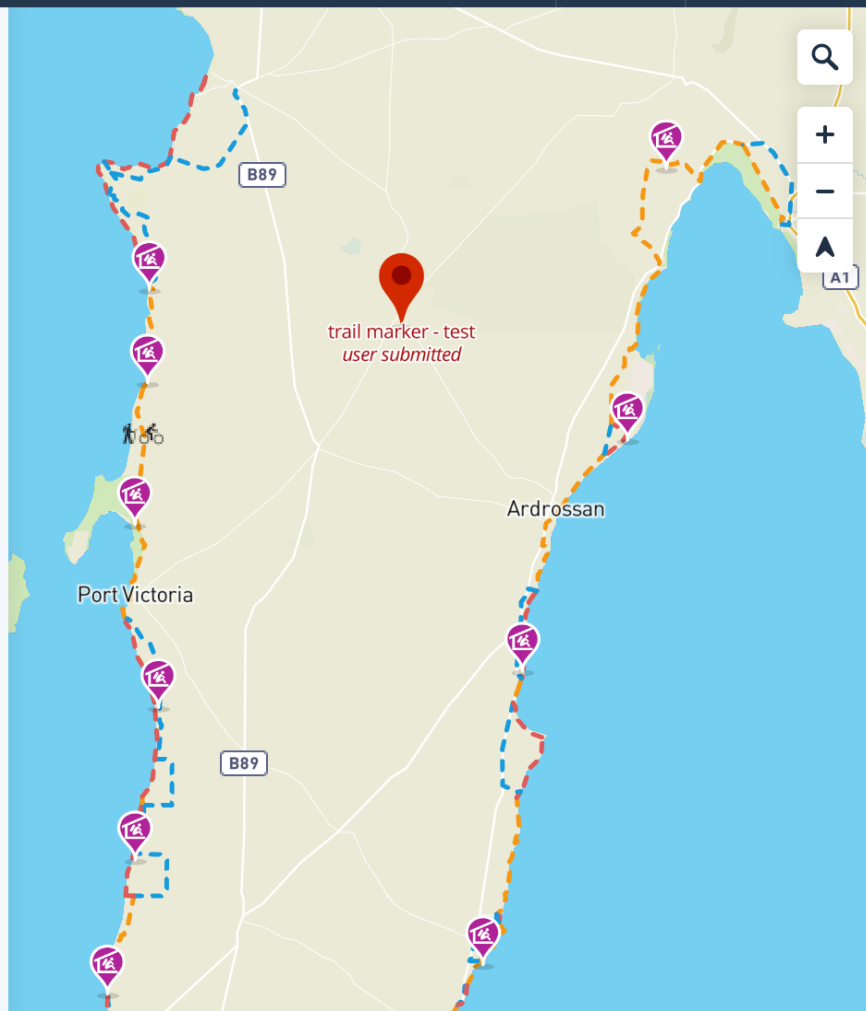
Zoom 22 Edit
14 px

[+ Add another stop](#)

[Clear value](#)

[Apply existing value](#)

[Details](#)



s/p/a/m/l/CountryLabel.tsx

s/p/a/m/MapLayers.tsx

" Press ? for help

.. (up a dir)

</WalkTheYorkeClient/

+ node_modules/

+ public/

- [x]src/

- components/

Carousel.tsx

Markdown.tsx

- contexts/

apollo-client.ts

TrailContext.tsx

TrailProvider.tsx

UserContext.tsx

UserProvider.tsx

- data/

- information/

stages.graphql.json

walktheyorke_oldcouncil_s

- [x]pages/

- [x]app/

- comments/

Comment.tsx

CommentForm.tsx

CommentThread.tsx

- [x]map/

438

1

2

3

4

5

6

7

8

9

10

11

12

13

14

15

16

17

18

19

20

21

22

23

24

25

26

onMouseMove={ (evt: any) => {

evt.target.getCanvas().style.cursor = 'pointer'

}}

onMouseLeave={ (evt: any) => {

evt.target.getCanvas().style.cursor = '';

}}

/>

<Layer

id="information-sign"

before="user-point"

type="symbol"

sourceId="walktheyorke_tile_server"

sourceLayer="information"

layout={{

'icon-image': 'info_sign',

'text-field': ['to-string', ['get', 'name']],

'text-anchor': 'top',

'text-size': 9,

'icon-allow-overlap': true,

'icon-padding': 0,

'icon-anchor': 'bottom',

}}

paint={{

'text-color': '#591a03',

'text-halo-color': 'hsl(0, 91%, 100%)',

'text-halo-width': 1,

'text-opacity': [



**University of
South Australia**

Any questions?