



Location SA

I would like to acknowledge the Kurna people of whose land we meet on today. I also pay my respects to their Elders past and present and extend that respect to other Aboriginal and Torres Strait Islander people who are present today.

Spatial Information Day
2019 Presentation
October 2019



Government
of South Australia



Location SA

**Sharing information through geospatial collaborations,
cloud infrastructure, web services and portal platforms.**

Bert Bruijn

Location SA Program Manager

location.sa.gov.au

Why Location SA?



Shared location intelligence:

- **Where is:** the fire burning?
- **Where did:** the fire burn?
- **Where do:** we think the fire will burn?
- **Where can:** we fight the fire?
- **Where will:** we fight the fire?

Why Location SA?

Adopt Best Practices:

- Leverage innovation

To Reduce Costs:

- Share resources
- Share expertise

Collaborate:

- To share knowledge
- To improve services to the community
- To get things done!

Who is Location SA?

Most SA Government Agencies:

Department for Environment and Water

Department of Primary Industries and Regions

Environment Protection Authority

Department of The Premier and Cabinet

SA Health

Attorney-General's Department

Department for Education

Department of Planning, Transport and

Infrastructure

SA Water

Country Fire Service

Department for Energy and Mining

South Australian Housing Authority

Department of Human Services

Department for Trade, Tourism and Investment

State Emergency Services

Forestry SA

SAFECOM

Department for Innovation and Skills

Courts Administration Authority



What is Location SA?

- **A single point of truth data sharing collaboration**
- SA Government agencies sharing:
 - Governance & Change Management
 - Spatial Strategic Directions
 - Spatial expertise
 - Enterprise Portal platforms
 - Data store (590 SPOT datasets) / data catalogue
 - AWS Cloud Infrastructure
 - Online data and map services
 - Location Metadata System (LMS)
 - Public Map Viewer



What is Location SA?



- **Leverage:**
 - Innovation and infrastructure in DPTI GIS Team (Information Services)
 - Common Esri Enterprise Agreement
 - Common AWS Cloud infrastructure
- **Across SA Government collaborations:**
 - Agencies cooperating with each other
 - Dedicated Program Manager
 - Data Management Group
 - Enterprise Portal Management Group

Where used?

- ArcGIS Desktop – GIS specialists
- Web maps – intersection services, data services, basemaps
- Public Map Viewer and open data (Data.SA) – supply of datasets (and soon, web services)
- Agency portal for ArcGIS solutions developed in Enterprise Portal platforms built on Amazon Web Services (AWS) cloud infrastructure

Past issues

- Ageing physical infrastructure with legacy solutions, high cost, reduced speed, outages and long change implementation times
- Increased demand with decreasing budgets for online business solutions development
- High cost of running multiple license agreements
- High cost of external business solutions development
- Solutions software vendor lock-in
- No highly available solutions with 24/7 support

The journey over the last 2 years

- AWS Cloud POCs by LSA Support Team identifying significant improvements in performance and cost
- Departmental move from physical to cloud infrastructure
- Whole of Government Esri Enterprise Agreement enabling software for all
- Enterprise Portals for ArcGIS built in AWS cloud

Portal Solutions Showcase



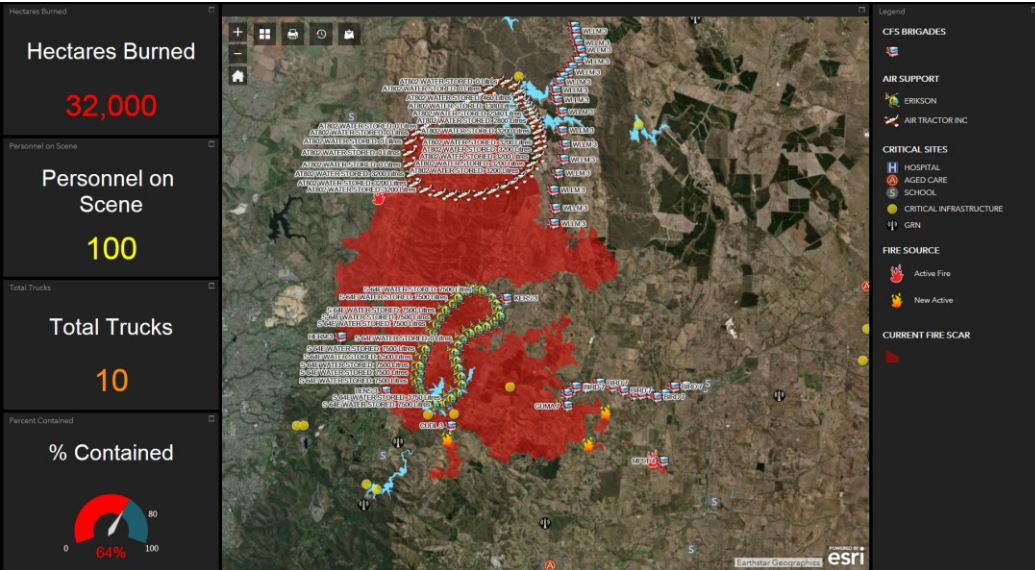
Country Fire Service warnings web map shows bushfires and other incidents in SA.

The map receives high traffic loads during incidents - approx. 275,000 API requests per day.

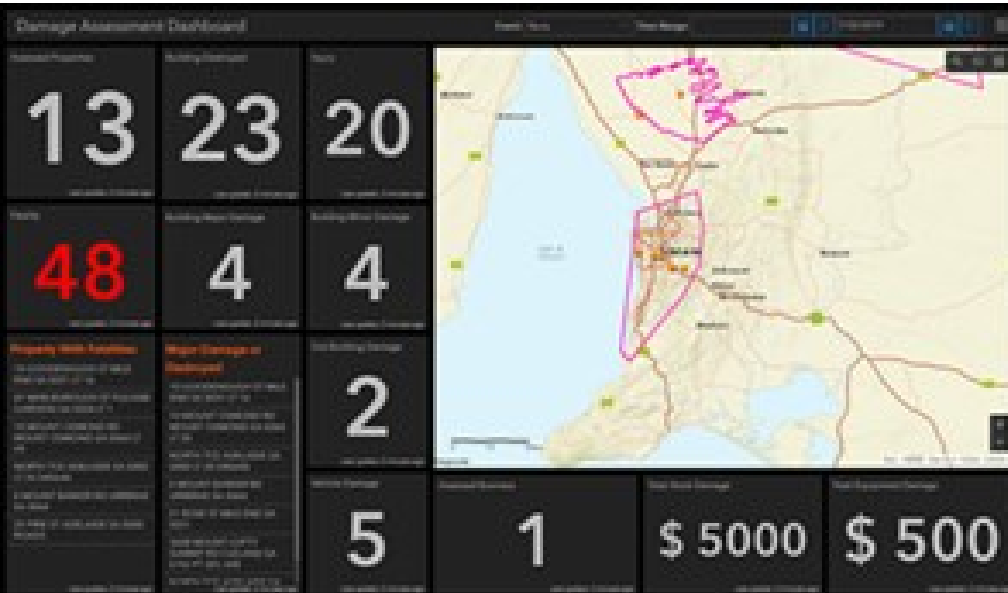
Portal Solutions Showcase



Attorney-General's Department are developing State Emergency Control Centre Dashboards to provide critical emergency information and statistics to key state government personnel responsible for activities during a state emergency



Portal Solutions Showcase

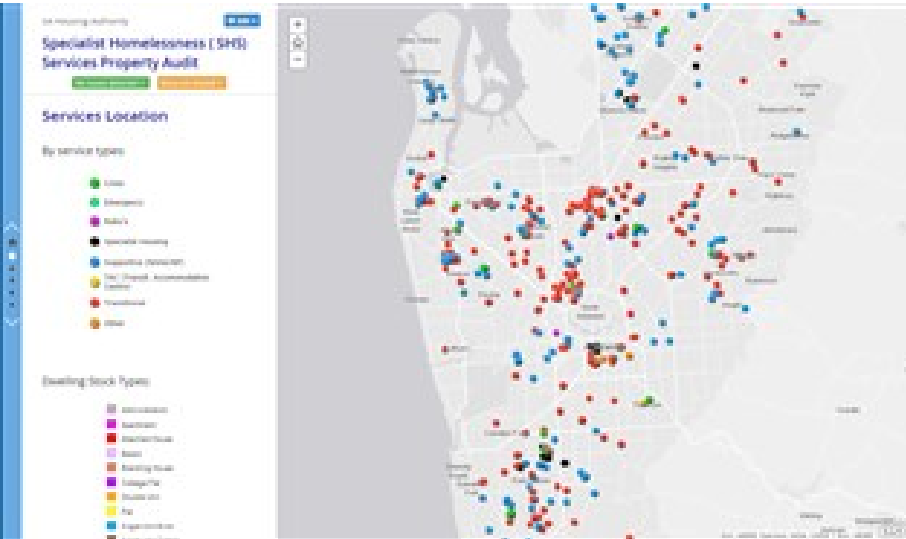


Note: test impact data only and not from an actual event.

Department of Human Services post state disaster impact assessment and reporting tools support the State's Rapid Damage Assessment Support Plan.

Consisting of three mobile data collection tools plus, operations dashboards to monitor the status of impact assessments and incidents.

Portal Solutions Showcase



The South Australian Housing Authority conversion of audit data into a portal application enables analysis of the funded outcomes established in the Specialist Homeless Services (SHS) service agreements against real outcomes.

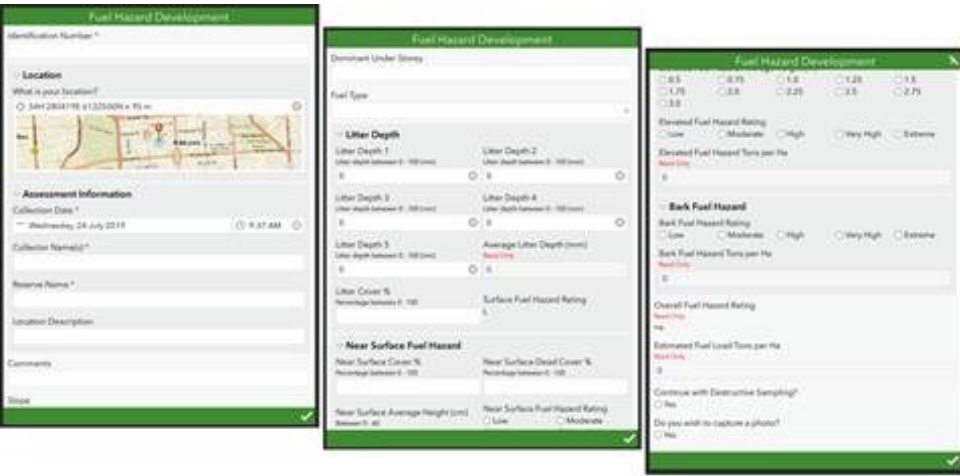
This supports identification of housing outcome discrepancies, and establish a baseline for tracking of SHS housing outcome numbers over time.

Portal Solutions Showcase

A screenshot of the Survey123 for ArcGIS web interface. The browser title bar shows "Survey123 for ArcGIS". The page header is blue with the text "DPTI Safety Walks" and a hamburger menu icon. The form is titled "Walk Location" and contains several fields: "Walk Date" with a dropdown menu showing "Wednesday, 22 May 2019" and a time dropdown showing "11:23 AM"; "Additional Observers Name(s)" with a text input field; "Walk Type *" with a dropdown menu showing "Road"; "Work Place *" with a dropdown menu showing "Field Services (Murray Bridge)"; and "Site (Optional)" with a text input field. A blue bar at the bottom of the form contains a white checkmark icon.

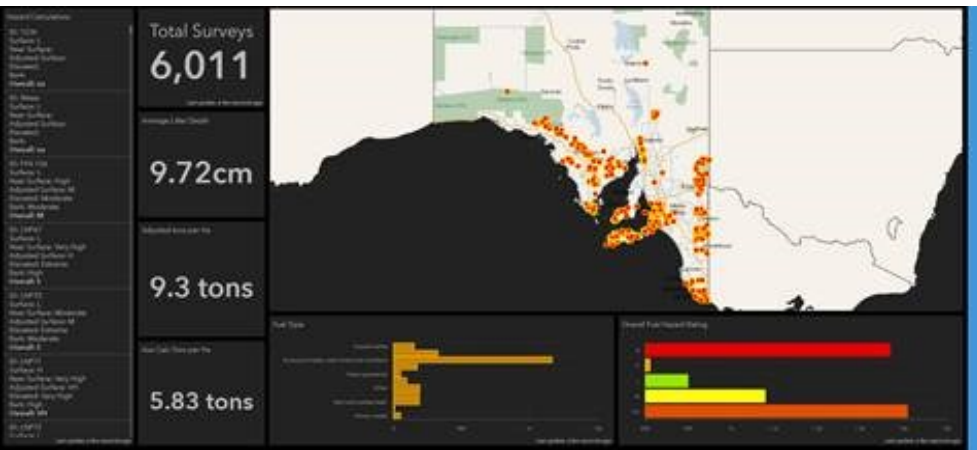
Department of Planning, Transport and Infrastructure use Survey123 to conduct OHS&W surveys of work areas. Reporting and analytics are undertaken on the survey results.

Portal Solutions Showcase



The screenshots show the app's data entry interface. The first screen is the 'Location' page, featuring a map and fields for 'Location', 'Collection Date', 'Collection Name', and 'Reserve Name'. The second screen is the 'Litter Depth' page, with a 'Fuel Type' dropdown and multiple input fields for 'Litter Depth 1' through 'Litter Depth 5', plus an 'Average Litter Depth (cm)' field. The third screen is the 'Bark Fuel Hazard' page, containing radio button options for 'Elevated Fuel Hazard Rating' (Low, Moderate, High, Very High, Extreme) and 'Bark Fuel Hazard' (Low, Moderate, High, Very High, Extreme), along with 'Overall Fuel Hazard Rating' and 'Estimated Fuel Load' fields.

The Department for Environment and Water Hazard Mobile Survey 123 app was developed to assess the hazard posed by accumulated fuel levels found in South Australian vegetation.



Based on the fuel levels recorded, the app will also calculate the overall fuel hazard level at each sampling site.

Portal Solutions Showcase



The screenshot shows the South Australian Investment GeoHub web map interface. The top navigation bar includes the South Australian Government logo and the title "South Australian Investment GeoHub". A search bar is present with the placeholder text "Search addresses or busin". The main map area displays a grid of orange and green markers representing property listings. A detailed information panel for a selected property is visible, showing:

- Commercial Real Estate
- Price: \$42,000 p.a. per tenancy + GST & Outgoings
- Property Type: Retail
- Property Area: 240
- Parking: 0

Below the information panel is a small image of a modern building and a "Zoom to" button. The bottom of the interface features a table of search results for "Commercial Real Estate for Sale or Lease".

Ad ID	Offer Type	Property Type	Address	Property Area	Parking	Ad Uri	Latitude	Longitude	Image
11358891	For Lease	Industrial/Wareho	1 Main Street, Beverley	300	0	https://www.com...main-street-beverley-sa-5009-11358891	-34.89133	138.5491	https://w700-l...
11357401	For Lease	Offices,Retail	134 Hutt Street,	237 - 483	0	https://www.com...-34.93	-34.93	138.6126	https://

At the bottom left, it indicates "3672 features 0 selected".

The Department for Trade, Tourism and Investment will soon release the South Australian Investment Atlas.

A web map to support business investment and growth in South Australia.

Keys to Success

- **LSA Support Team:**
 - Highly skilled small team in a large department reliant on strong infrastructure and spatial technologies
- **Shared:**
 - Data Sharing Agreements
 - Leadership (Governance Framework)
 - Strategies (LSA Work Activities = technical projects + collaborations)
 - Change Management (CM Framework)

Questions?

Bert Bruijn

Location SA Program Manager

Email: locationsa@sa.gov.au

location.sa.gov.au